

**ROOTED HR**

HR CONSULTANCY SERVICES  
Elevate your organisation

# Rooted HR Training

2024



Visit Our Website

**Rooted-HR.com**



The background features a low-angle shot of several modern skyscrapers reaching towards a blue sky with light clouds. Overlaid on the right side of the image are several abstract shapes: a large, curved, multi-colored shape in shades of maroon, yellow, and dark teal; a smaller dark teal circle; and a thin maroon ring.

# About Us

Established in 2012, Rooted HR is a leading HR consultancy firm based in London, UK, serving clients globally. We specialize in providing strategic total rewards consultancy, salary benchmarking, salary scale development, leadership development, and a wide range of assessments, including IQ and psychometric testing. Our expertise also extends to soft skills training for corporates, job analysis, job evaluation, organizational restructuring and design, and more.

With a team of experienced HR professionals, we are committed to delivering tailored solutions that meet the unique needs of our clients. Our approach is rooted in a deep understanding of the latest HR trends and best practices, ensuring that our clients receive the most effective and up-to-date guidance.

At Rooted HR, we believe that people are the most valuable asset of any organization. We are passionate about helping our clients create workplaces where employees thrive, and where businesses can achieve their full potential.

# Benefits of Rooted HR's B2B Training



## Increased Employee Productivity

Our training programs are designed to enhance employee skills, knowledge, and competencies, leading to improved productivity and efficiency in the workplace.



## Enhanced Employee Engagement

Engaged employees are more motivated, productive, and loyal to their organizations. Our training programs foster a positive work environment, promoting employee engagement and job satisfaction.



## Improved Leadership and Management Skills

We offer specialized training for leaders and managers, equipping them with the necessary skills to effectively lead and manage teams, make informed decisions, and drive organizational success.



## Customized Training Solutions

We understand that every organization is unique, which is why we tailor our training programs to meet the specific needs and objectives of our clients. Our customized approach ensures that the training is relevant and impactful for your organization.

# Benefits of Rooted HR's B2B Training



## Expert Trainers and Facilitators

Our team of experienced trainers and facilitators possess deep industry knowledge and expertise. They employ engaging and interactive training methods to ensure that participants actively participate and retain the knowledge gained.



## Measurable Results

We provide comprehensive reporting and analytics to track the progress and impact of our training programs. This allows our clients to evaluate the effectiveness of the training and make data-driven decisions for continuous improvement.



## Cost-Effective Solutions

Our training programs are designed to deliver maximum value while being cost-effective. We work closely with our clients to develop training plans that align with their budget and provide a strong return on investment.



## Continuous Support

We offer ongoing support and resources to our clients even after the training is completed. This ensures that organizations can sustain the positive changes and continue to build a strong and capable workforce.

# Expert Trainers from Around the Globe:

At Rooted HR, we pride ourselves on having a team of highly qualified and experienced trainers who are subject matter experts in their respective fields. Our trainers are certified by various prestigious bodies in the United Kingdom, ensuring that they possess the knowledge, skills, and expertise to deliver top-quality training.

In addition to their subject matter expertise, our trainers come from diverse cultural backgrounds and have a deep understanding of different languages and cultures. This global perspective allows us to provide training that is tailored to the specific needs and challenges of our clients, regardless of their location or industry.

Our trainers are passionate about sharing their knowledge and experience, and they are committed to helping participants achieve their full potential. They employ a variety of engaging and interactive training methods to ensure that participants actively participate in the learning process and retain the knowledge and skills they gain.

By choosing Rooted HR, you can be confident that you are receiving training from the best in the industry. Our team of expert trainers will provide you with the tools and knowledge you need to succeed in your career.

# Benefits of Rooted HR's Expert Trainers:



## Deep Subject Matter Expertise

Our trainers are highly qualified and experienced in their respective fields, ensuring that you receive accurate and up-to-date information.



## Certified by Prestigious Bodies

Our trainers are certified by various prestigious bodies in the United Kingdom, demonstrating their commitment to excellence and professionalism.



## Global Perspective

Our trainers come from diverse cultural backgrounds and have a deep understanding of different languages and cultures, allowing us to provide training that is tailored to your specific needs.



## Engaging and Interactive Training Methods

Our trainers employ a variety of engaging and interactive training methods to ensure that you actively participate in the learning process and retain the knowledge and skills you gain.



## Commitment to Your Success

Our trainers are passionate about sharing their knowledge and experience, and they are committed to helping you achieve your full potential.

**At Rooted HR**, we offer comprehensive **IQ and psychometric assessments** to help organizations gain deeper insights into the cognitive abilities, personality traits, and behavioral tendencies of their employees and candidates. These assessments provide valuable information that can be used for various purposes, including:

### Recruitment and Selection

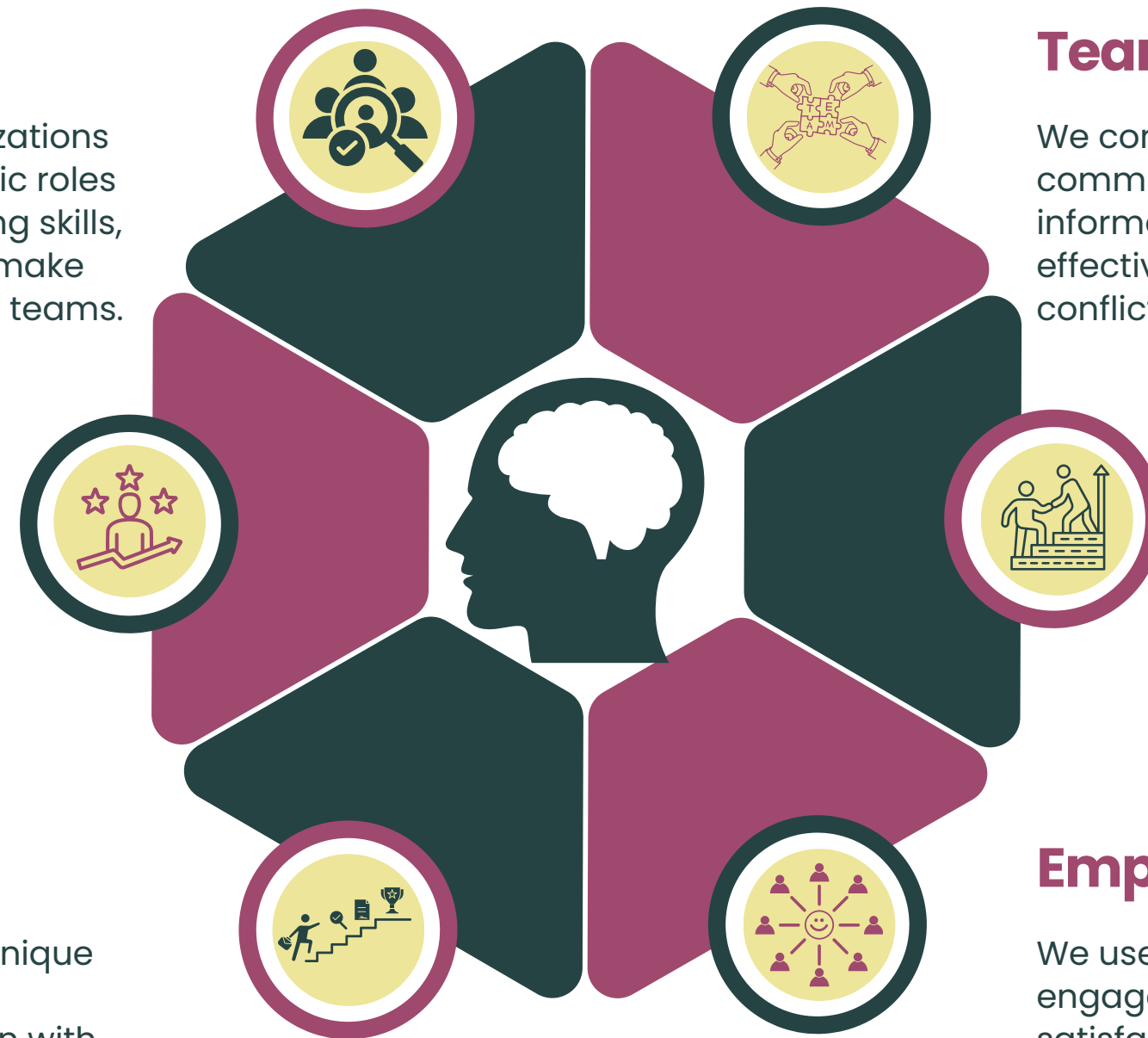
Our IQ and psychometric assessments assist organizations in identifying the most suitable candidates for specific roles by evaluating their cognitive abilities, problem-solving skills, and personality traits. This enables organizations to make informed hiring decisions and build high-performing teams.

### Talent Development

We use IQ and psychometric assessments to identify employees' strengths and areas for development. This information forms the basis for personalized development plans, ensuring that employees receive targeted training and support to enhance their skills and competencies.

### Career Planning

Our assessments help individuals understand their unique strengths and preferences, enabling them to make informed career decisions and pursue roles that align with their abilities and interests.



### Team Building

We conduct team assessments to identify team dynamics, communication styles, and potential areas of conflict. This information helps organizations build cohesive and effective teams by promoting collaboration, resolving conflicts, and enhancing team performance.

### Leadership Development

Our assessments assist in identifying leadership potential and assessing the effectiveness of current leaders. This enables organizations to develop tailored leadership development programs that enhance the skills and abilities of their leaders, resulting in improved organizational performance.

### Employee Engagement

We use psychometric assessments to measure employee engagement levels and identify factors that contribute to job satisfaction and motivation. This information helps organizations create a positive work environment and implement strategies to enhance employee engagement and retention.

At **Rooted HR**, we offer comprehensive **psychometric assessments** that include both personality traits and ability tests. These assessments provide valuable insights into an individual's psychological characteristics, behavioral tendencies, and cognitive abilities.



## Personality Traits

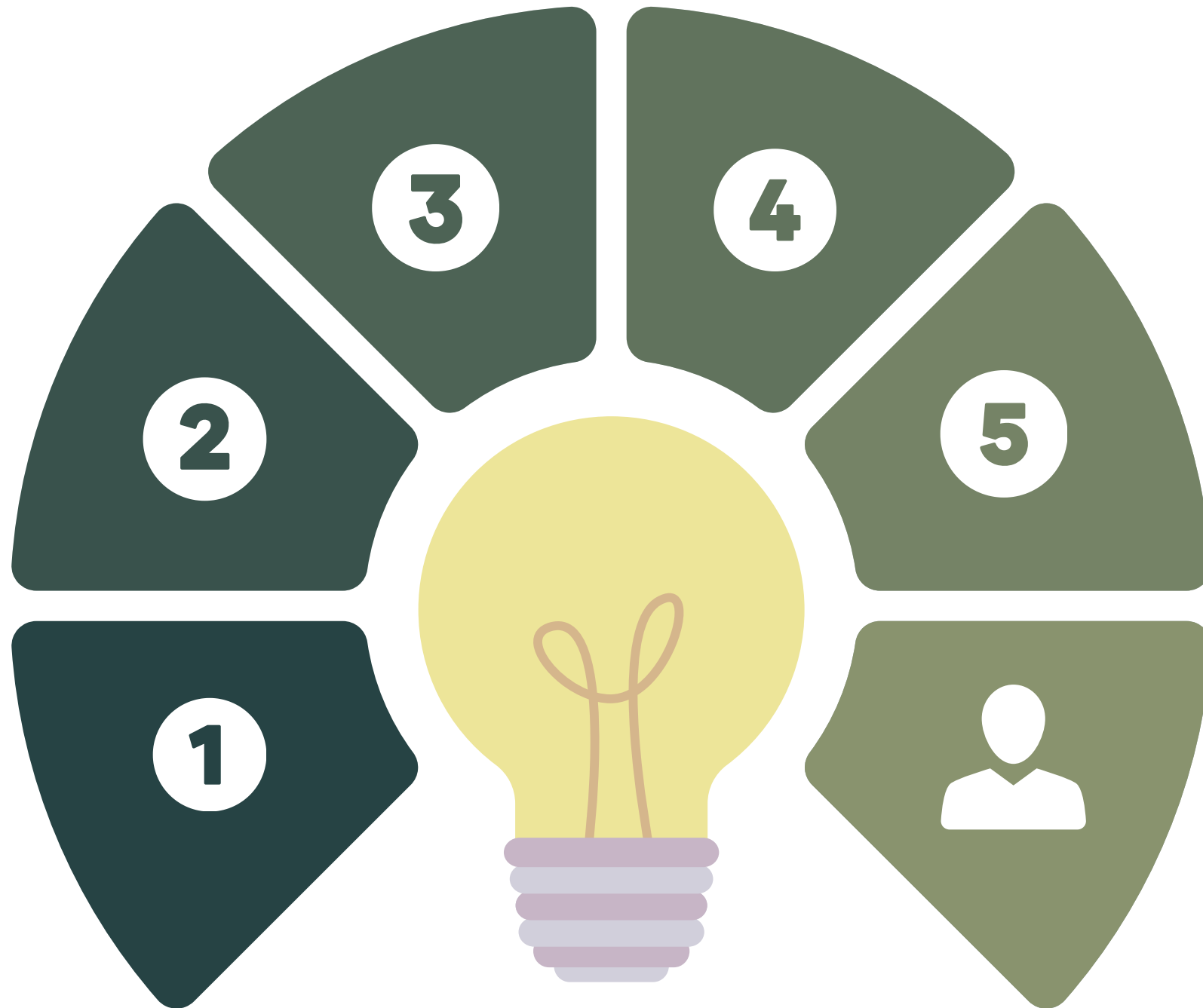
- **Extroversion vs. Introversion:** This trait measures an individual's preference for social interaction and engagement.
- **Agreeableness vs. Disagreeableness:** This trait assesses an individual's tendency to be cooperative, trusting, and compassionate.
- **Conscientiousness vs. Unconscientiousness:** This trait measures an individual's level of organization, reliability, and self-discipline.
- **Emotional Stability vs. Neuroticism:** This trait assesses an individual's tendency to experience negative emotions and emotional distress.
- **Openness to Experience vs. Closedness to Experience:** This trait measures an individual's willingness to embrace new ideas, experiences, and challenges.



## Ability Tests

- **Verbal Reasoning:** This test measures an individual's ability to understand and interpret written information.
- **Numerical Reasoning:** This test assesses an individual's ability to analyze and manipulate numerical data.
- **Logical Reasoning:** This test measures an individual's ability to think critically and solve problems using logical reasoning.
- **Spatial Reasoning:** This test assesses an individual's ability to perceive and manipulate objects in space.
- **Mechanical Reasoning:** This test measures an individual's ability to understand and apply mechanical principles.

# Benefits of Rooted HR's Psychometric Assessments



1

## Talent Acquisition

Our assessments help organizations identify candidates with the right personality traits and abilities for specific roles, leading to improved hiring decisions and team performance.

2

## Talent Development

We provide personalized development plans based on assessment results, enabling individuals to enhance their strengths and address areas for improvement.

3

## Career Planning

Our assessments assist individuals in understanding their unique traits and abilities, facilitating informed career decisions and career path planning.

4

## Team Building

We conduct team assessments to identify team dynamics, communication styles, and potential conflicts, enabling organizations to build cohesive and effective teams.

5

## Leadership Development

Our assessments help identify leadership potential and assess the effectiveness of current leaders, supporting tailored leadership development programs.

6

## Employee Engagement

We use psychometric assessments to measure employee engagement levels and identify factors that contribute to job satisfaction and motivation, allowing organizations to create a positive work environment and implement strategies to enhance employee engagement and retention.



# Accredited Certificates from the United Kingdom

At Rooted HR, we are proud to offer accredited certificates from the United Kingdom to all participants who successfully complete our training programs. These certificates are recognized and valued by employers worldwide, demonstrating the high quality and rigor of our training.



# Award-Winning Training Techniques

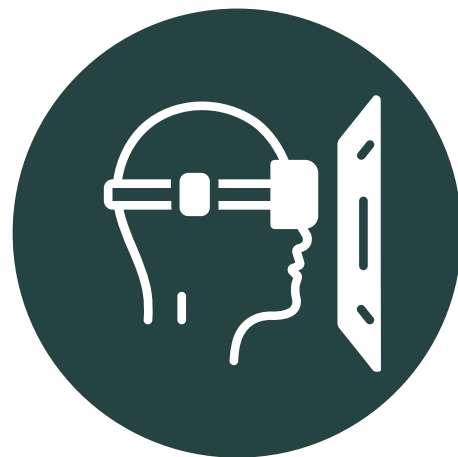
We employ **award-winning training** techniques to ensure that our participants receive the most effective and engaging learning experience possible. Our training methods are based on the latest research in adult learning and incorporate a variety of interactive elements, such as:



**Case studies**



**Role-plays**



**Simulations**



**Group discussions**



**Hands-on activities**

These techniques help participants to actively engage with the material and retain the knowledge and skills they gain.

# Benefits of Rooted HR's Accredited Certificates and Award-Winning Training Techniques:

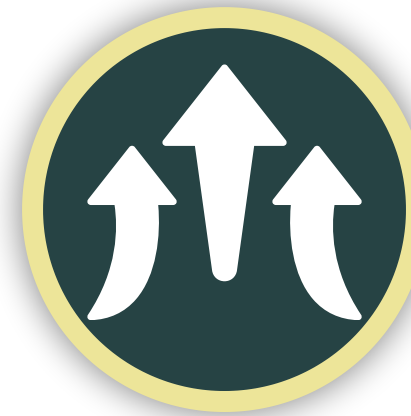
## Enhanced Credibility

Our accredited certificates provide participants with a recognized credential that demonstrates their expertise and commitment to professional development.



## Improved Job Performance

Our award-winning training techniques ensure that participants gain practical skills and knowledge that they can immediately apply in their roles, leading to improved job performance and career advancement.



## Increased Employability

Employers value candidates who have completed accredited training programs and possess the skills and knowledge that are in high demand.



## Enhanced Confidence

Successfully completing our accredited training programs gives participants a sense of accomplishment and boosts their confidence in their abilities.



By choosing Rooted HR for your training needs, you can be assured that you are receiving the highest quality training, delivered using award-winning techniques, and recognized by accredited certificates from the United Kingdom. Invest in your professional development and take your career to the next level with Rooted HR.

# Soft Skills Training at Rooted HR

At Rooted HR, we understand that soft skills are essential for success in today's workplace. Our comprehensive soft skills training programs are designed to enhance the interpersonal, communication, and emotional intelligence skills of your employees, enabling them to thrive in their roles and contribute to a positive work environment.



## Key Soft Skills We Focus On

### Communication Skills

We offer training to improve verbal, written, and non-verbal communication skills, ensuring that employees can effectively convey their ideas, listen actively, and build rapport with colleagues and clients.



### Conflict Resolution

Our training equips employees with strategies for managing and resolving conflicts constructively, fostering a harmonious work environment and promoting collaboration.



### Emotional Intelligence

We help employees develop their emotional intelligence by recognizing and managing their own emotions, as well as understanding and empathizing with others.



### Teamwork and Collaboration

Our training emphasizes the importance of teamwork and collaboration, teaching employees how to work effectively in teams, share ideas, and leverage diverse perspectives to achieve common goals.



### Problem-Solving and Decision-Making

We provide training to enhance employees' problem-solving and decision-making skills, enabling them to analyze situations critically, generate creative solutions, and make informed choices.

# Key Soft Skills We Focus On

## Adaptability and Flexibility

In today's rapidly changing business environment, we train employees to be adaptable and flexible, embracing change and finding innovative ways to overcome challenges.



## Leadership and Influence

Our training equips employees with leadership skills, even if they are not in formal leadership roles, empowering them to influence others and drive positive change within the organization.



## Time Management and Productivity

We offer training to help employees manage their time effectively, prioritize tasks, and enhance their productivity, leading to increased efficiency and reduced stress.



## Stress Management and Resilience

Our training provides techniques for managing stress and building resilience, helping employees stay focused, motivated, and productive even under pressure.



## Cultural Awareness and Sensitivity

In a globalized workplace, we train employees to be culturally aware and sensitive, fostering inclusivity and understanding among diverse teams.



By investing in soft skills training with Rooted HR, you can empower your employees to communicate effectively, collaborate seamlessly, and navigate complex workplace dynamics. This leads to improved employee engagement, enhanced productivity, and a positive organizational culture that drives success.

At Rooted HR, we recognize the critical role that effective leadership plays in organizational success. **Our comprehensive leadership assessment, development, and training services** are designed to identify, nurture, and empower leaders at all levels within your organization.



## Leadership Assessment

- **360-Degree Feedback:** We conduct thorough 360-degree feedback assessments to provide leaders with a comprehensive understanding of their strengths and areas for improvement. This assessment involves gathering feedback from peers, subordinates, supervisors, and clients, ensuring a holistic view of leadership effectiveness.
- **Leadership Competency Assessment:** We assess leaders against a predefined set of leadership competencies that are critical for success in your organization. This assessment helps identify gaps and areas where leaders need further development.



## Leadership Development

- **Customized Development Plans:** Based on the assessment results, we create personalized development plans for each leader. These plans outline specific actions, resources, and experiences that will help them enhance their leadership skills and competencies.
- **Mentoring and Coaching:** We provide one-on-one mentoring and coaching sessions to support leaders in their development journey. Our experienced mentors and coaches offer guidance, advice, and accountability to help leaders achieve their full potential.
- **Action Learning:** We facilitate action learning programs that provide leaders with opportunities to apply their knowledge and skills in real-life situations. This hands-on approach reinforces learning and promotes continuous improvement.



## Leadership Training

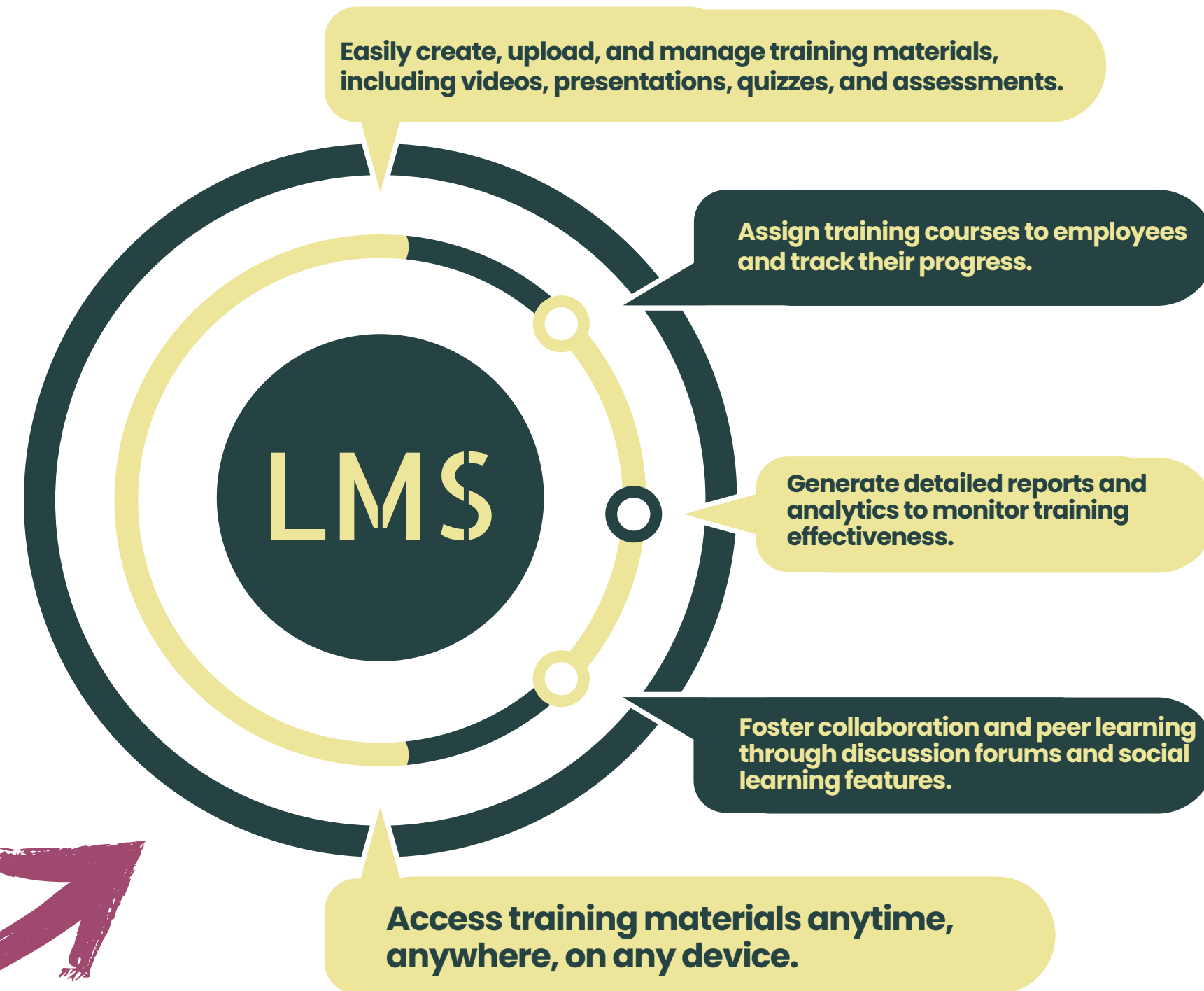
- **Leadership Workshops:** We offer a range of leadership workshops that cover essential topics such as strategic thinking, communication, conflict resolution, and team building. These workshops are designed to enhance leaders' abilities and equip them with practical tools and techniques.
- **Customized Training Programs:** We develop customized training programs tailored to the specific needs and challenges of your organization. These programs may include topics such as change management, innovation, or industry-specific leadership skills.
- **Virtual Learning:** We offer virtual learning options to accommodate the busy schedules of leaders. Our online courses and webinars provide flexibility and convenience while delivering high-quality leadership content.

# Latest Trend Training Tools at Rooted HR

At Rooted HR, we leverage the latest training tools and technologies to deliver engaging and effective learning experiences to our clients. Our commitment to innovation ensures that our clients have access to the most advanced training solutions available.

## Learning Management System (LMS)

Our comprehensive LMS provides a centralized platform for managing and delivering training content. With our user-friendly LMS, clients can:



# Mobile App

Our mobile app extends the learning experience beyond the desktop, allowing employees to access training content on their smartphones and tablets. With our mobile app, employees can:



## Gamification

We use gamification techniques to make learning fun and engaging. By incorporating game elements such as points, badges, and leaderboards, we motivate employees to complete training courses and achieve their learning goals.



## Microlearning

We offer microlearning modules that deliver short, focused bursts of information. Microlearning is ideal for busy employees who need to learn quickly and efficiently.



## Social Learning

We encourage social learning by providing opportunities for employees to collaborate, share ideas, and learn from each other. Social learning fosters a sense of community and enhances the learning experience.



# Contact Us

Thank you for considering our training services. We are dedicated to providing high-quality training programs designed to enhance your skills and knowledge in your field.

If you have any questions or would like to inquire about our training offerings, please don't hesitate to contact us. You can reach us through the following channels:



+44 7984860223



[www.Rooted-HR.com](http://www.Rooted-HR.com)



[info@rooted-hr.com](mailto:info@rooted-hr.com)

Our team is standing by to assist you with any inquiries you may have. We look forward to helping you achieve your training goals.





**ROOTED HR**

HR CONSULTANCY SERVICES  
Elevate your organisation

**Thank You**  
For Your Attention



Visit Our Website  
**Rooted-HR.com**

